

Features

HDL-MHS110W.2W wall mount infrared motion sensor , is very Flexible and convenient as using cardan joint installation. It has below features.

- Human movement detecting
- master-slave mode selectable
- Detective distance : 8m
- Detective angle : 110°
- Detective Sensitivity is adjustable
- Communication : RS485

Important Notes

- BUS Cable - CAT5E or HDL Bus/KNX cable
- BUS Connection - Recommended Hand-by-Hand
- Installation-Ceiling or Wall mount
- Installation place – indoor, to avoid installed near the air-conditioning vent, away from the heat producer
- Environment temperature - below 36°C

Product Specifications

- Power supply : DC12-30V
- BUS Power Consumption : 20mA/DC24V
- Sensitivity setting range : 1 ~ 100
- Detective range : 110 ° , radius 8meters
- Dimension : 106mm×60.2mm×60mm
- CE Certification
- Working Temperature : 0~36°C
- Working Relative Humidity : 20%~90%
- Storage Temperature : -40°C~+55°C
- Storage Relative Humidity : 10%~93%
- Protection Degree : IP20

HDL-Bus Definition for cable

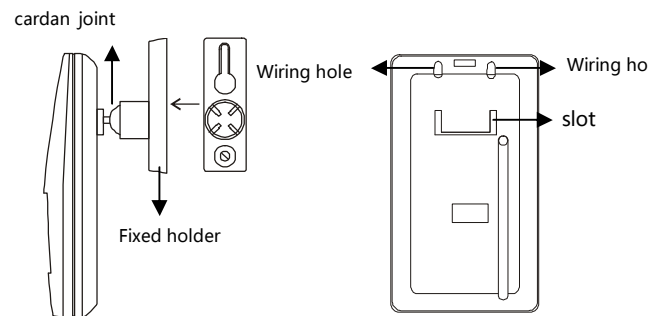
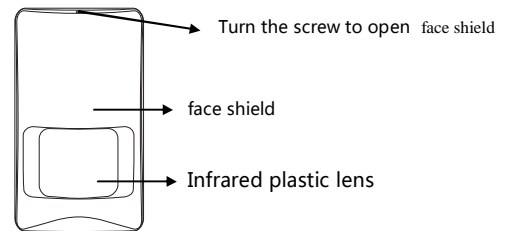
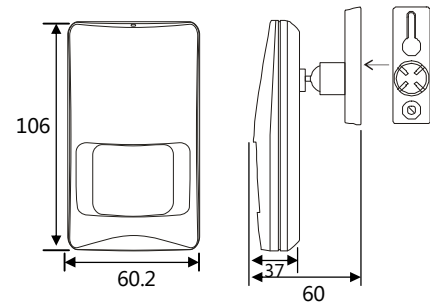
CAT5/CAT5E	Bus	HDL Bus/KNX Cable
Brown White & Orange, white	COM	black
Blue, White & Green, White	DATA-	white
Blue & green	DATA+	Yellow
Brown & Orange	DC24V	red



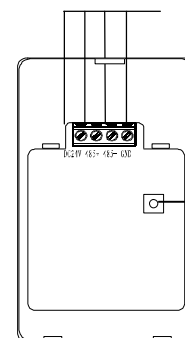
Safety Attention

- Screw Down strength is less than 0.1Nm
- Do not get wrong connection for bus interface
- Do not get AC power into Bus cable
- Non-Rain, Non-Contact with other liquids or corrosive gases

Type



HDL - Bus



Interior structure

Device address setting button
Press this button 3S, the red indicator light is on, to modify address by HDL-Bus software. Address manage → modify address, read and modify the start address.