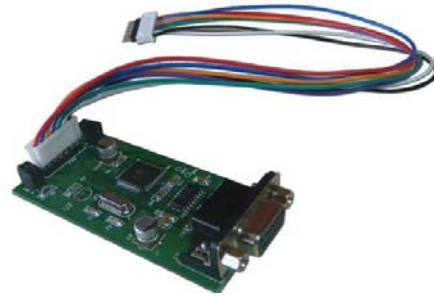




# SB-UPG-KIT

Upgrading Kit

Upgrade Instructions

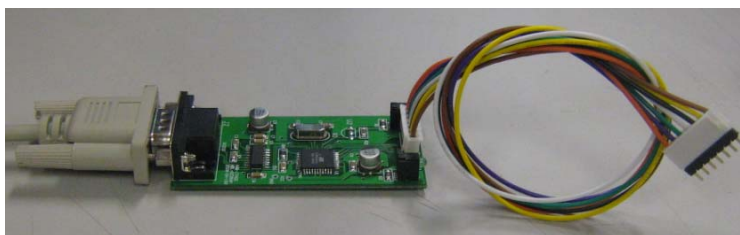


## Preface

With the improvement of product features, The original product need to be upgraded, Smart-HDL provide the necessary upgrade equipment to be up to date with all the new Features and enhancement of functionality.

## Equipment including :

Upgrade software and update program , serial port line , programmer , traversing

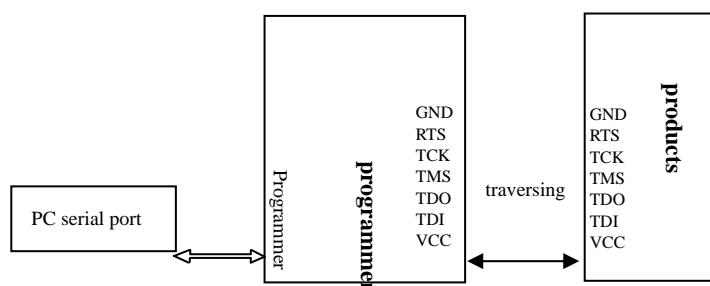


serial port line

programmer

traversing

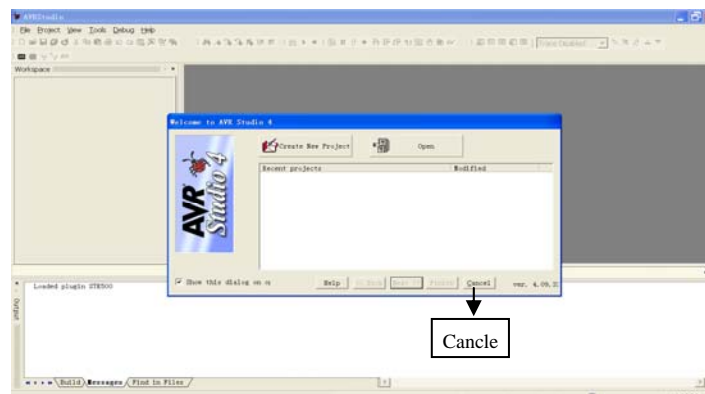
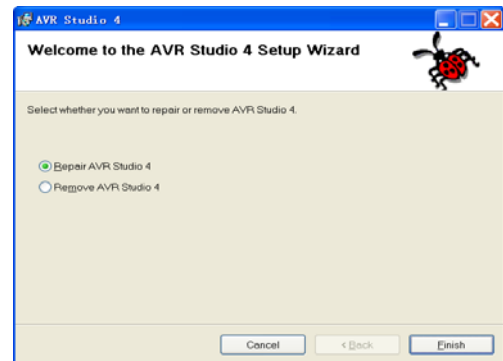
## Equipment connection shown below:



## Update step:

### I- First Install software and open it.

- 1- Install **AvrStudio** software.
- 2- Open the software,
- 3- Click “Cance” , on the opining window



### II- Second Connect the upgrading Kit

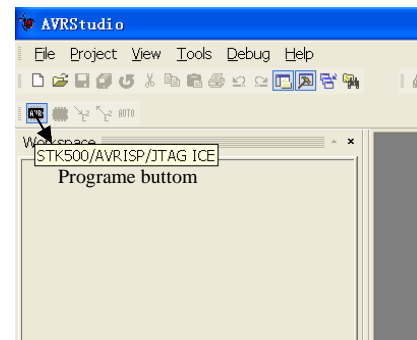
1. connect power to module
2. connect updating kit to RS232 to PC
3. connect updating cable to the module then LED turn on

#### **NOTICE:**

In connection process, the programmer ports must match the seven ports one by one on the products, cannot access in reverse. When you connect in right way the Both LED of the upgrading kit will turn ON.

### III- make your configuration

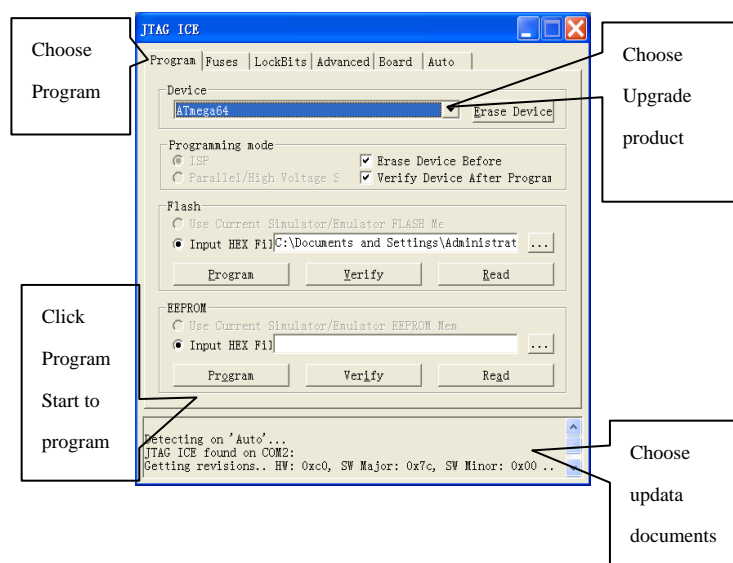
1. press chip icon to AVR studio software
2. connection success
3. device select, device mode Please see the table of devices type for reference.



### Product type

Type M	odule
ATMEGA 64	RS232, Logic Module, DLP LCD panel , Security Module
ATMEGA 32	I/O module , 8 in 1 sensor
ATMEGA 16	HVAC, 6 Button p panel, EIB, Room Partitioner , 4 zone input

### 4. flash/select the Firmware HEX file



## IV- Start uploading and upgrading

- 1- On the flash section press program to start uploading
- 2- It will start program then it will start read to confirm
- 3- After the upload complete it will show you leaving programming mode Ok
- 4- Close the window
- 5- Remove the upgrading kit

