

Preparation of 7 inches touchscreen

If you got a SD card, you can directly copy the 'touchlife' folder to touchscreen(My Device→NandFlash)

You also can copy the software folder by network.

PC sever's setting

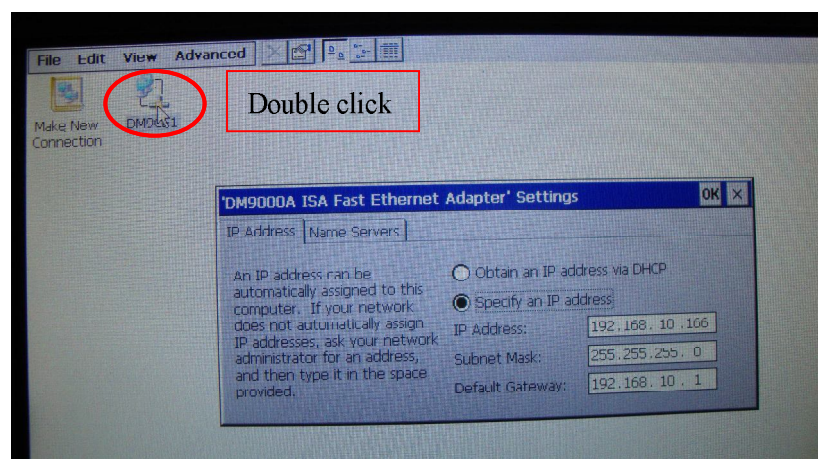
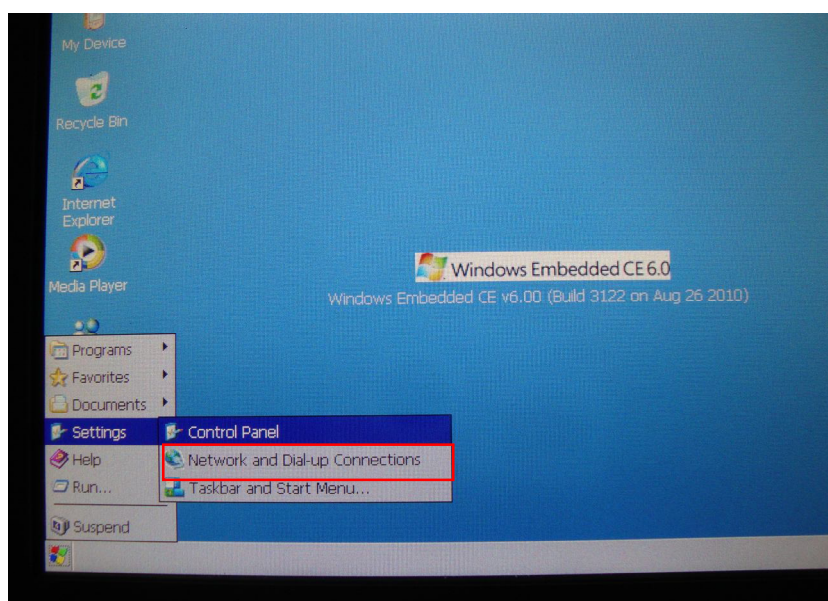
Enable the PC sever's Guest account, and then share the touchlife software's folder:

Start --> Control Panel --> User Accounts --> Guest --> Turn on Guest Account

Touch life's setting

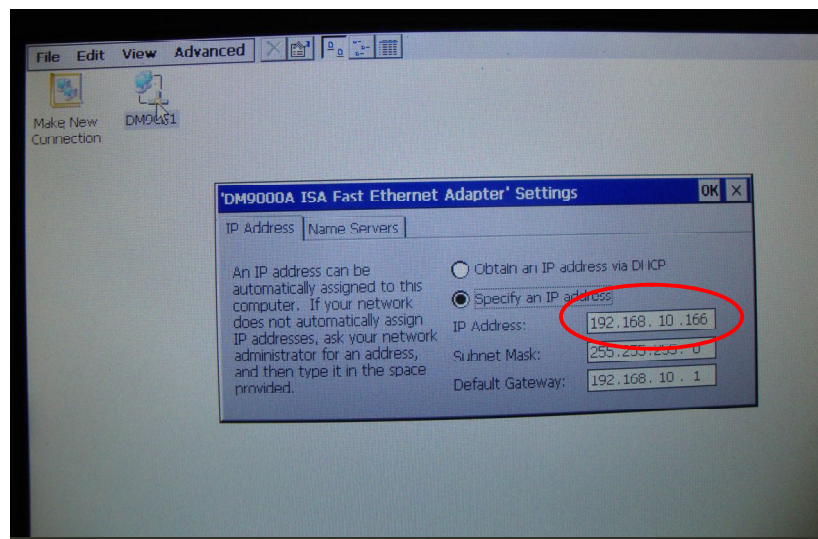
1.IP Address setting

Settings → Network and Dial-up Connections

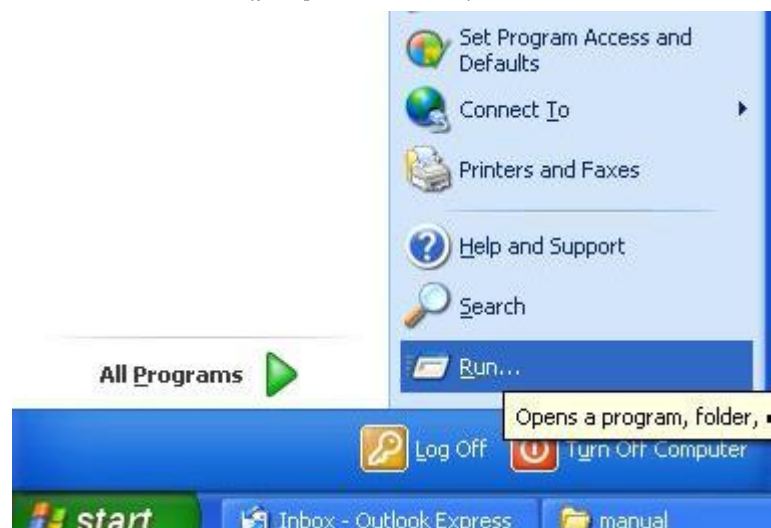


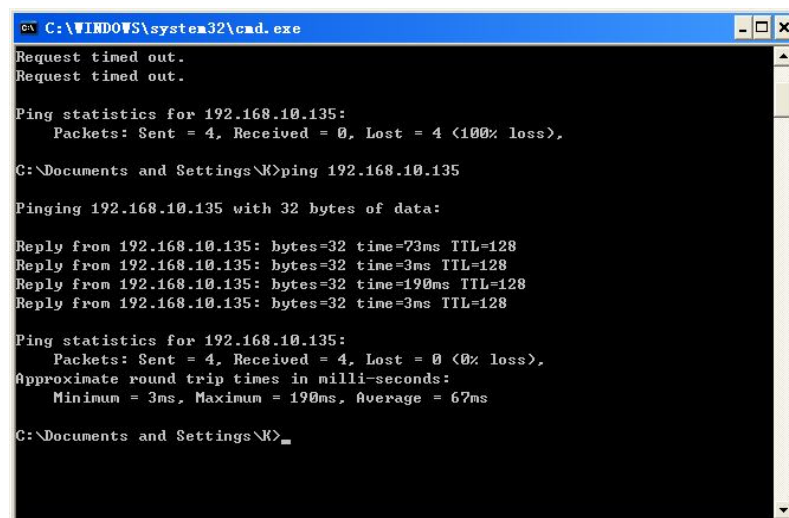
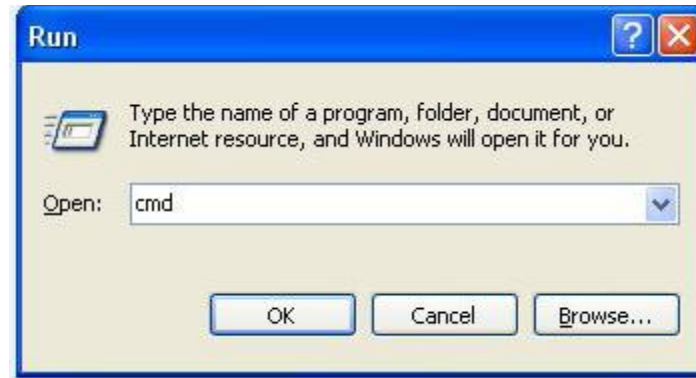
The IP address of touch screen and host PC must under the same network segment.

e.g. 192.168.10.*

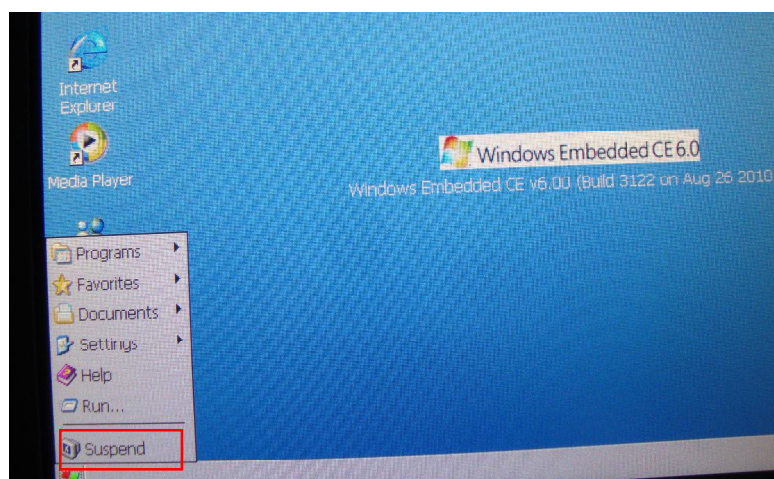


check the connection on host PC(ping command):



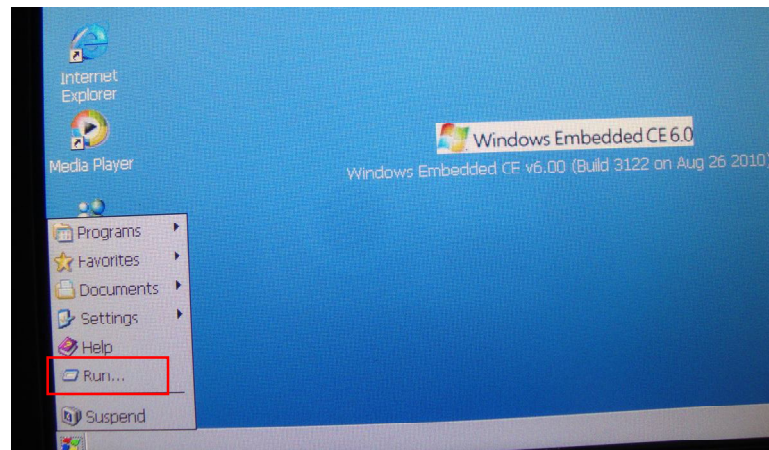


When IP address modified, please suspend the system and the restart to save settings.

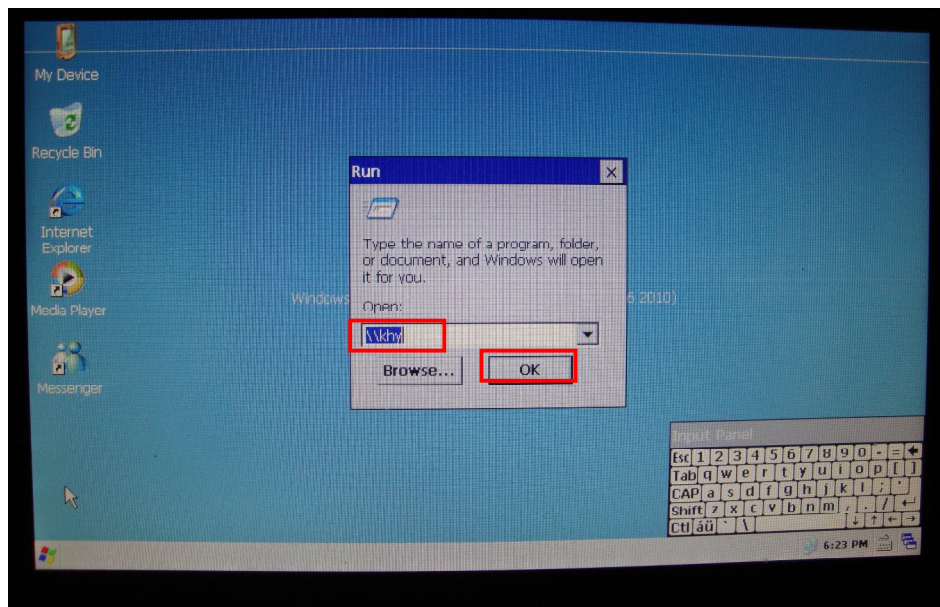


2. Access PC server, copy the touchlife software(updating of touchlife)

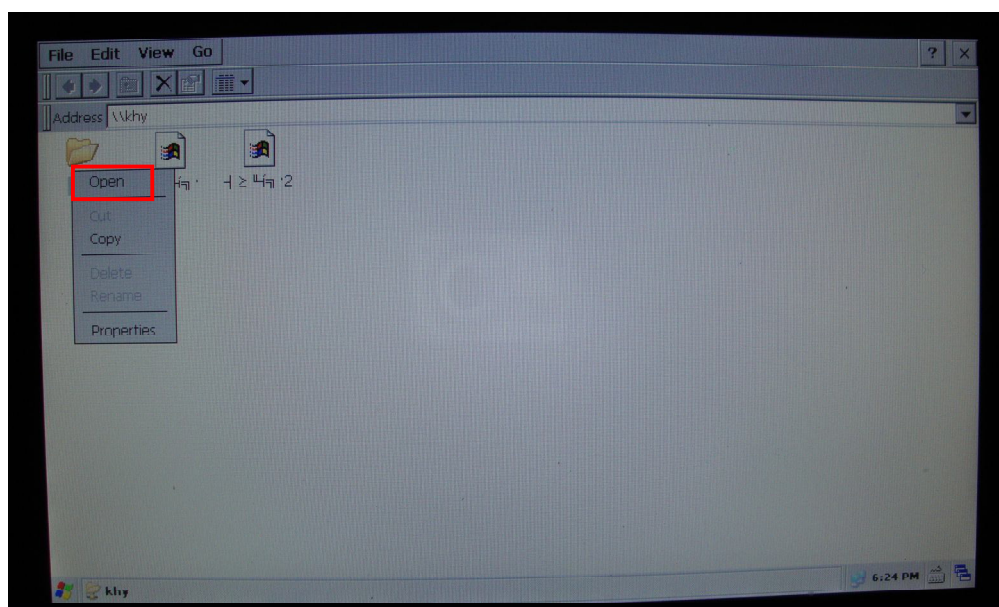
Click Run...,



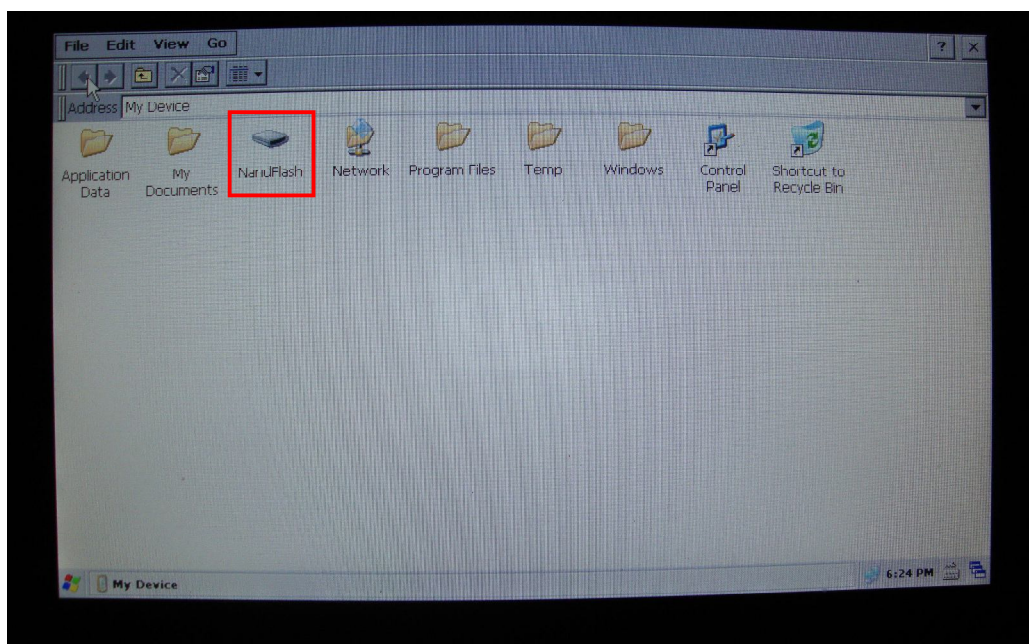
Input the name of pc sever.



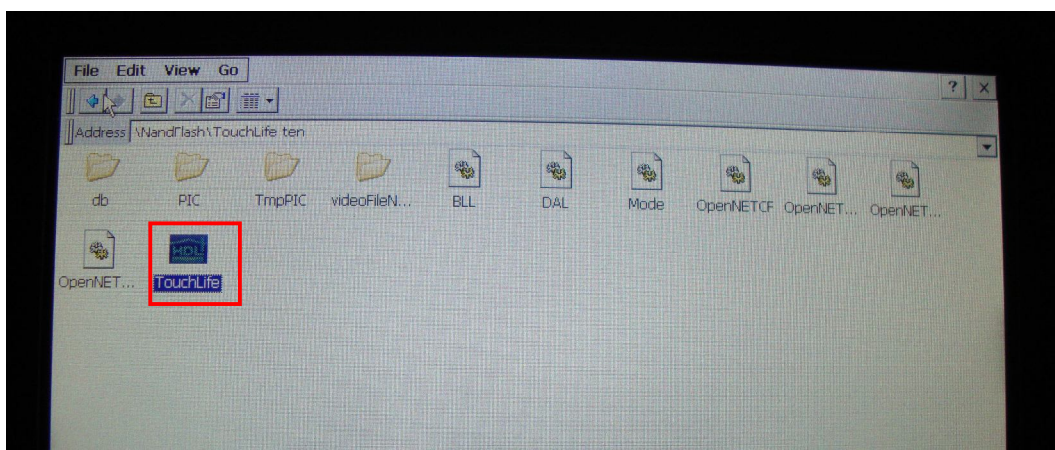
Find the touchlife software folder, first Open, then copy it.



My Device→NandFlash”
Copy to :



3. Open the folder and launch:



4. How to exit:

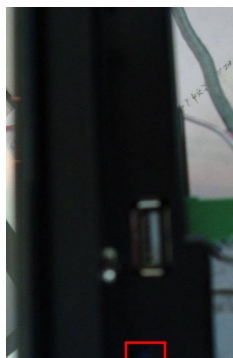
Click the icon in red square 5 times to exit.



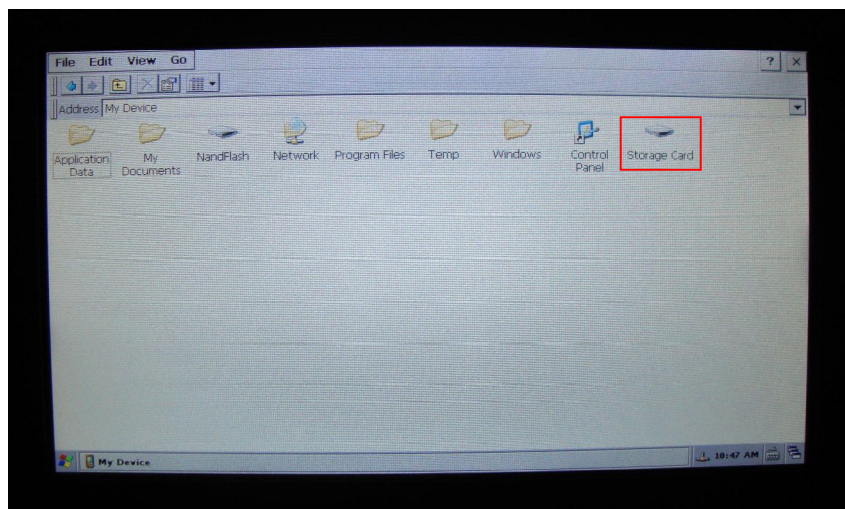
Another way: With the SD copy files

The files on the SD card, the SD card into the Touch Screen, Open the SD card; copy the file, paste to the Nandflash.

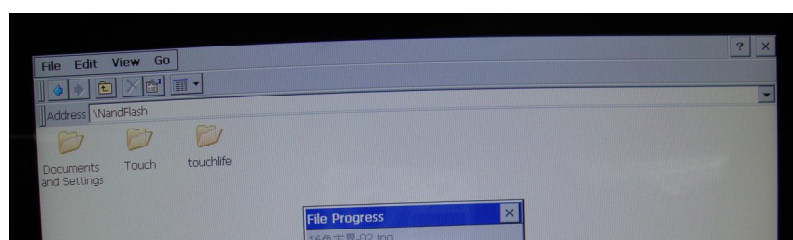
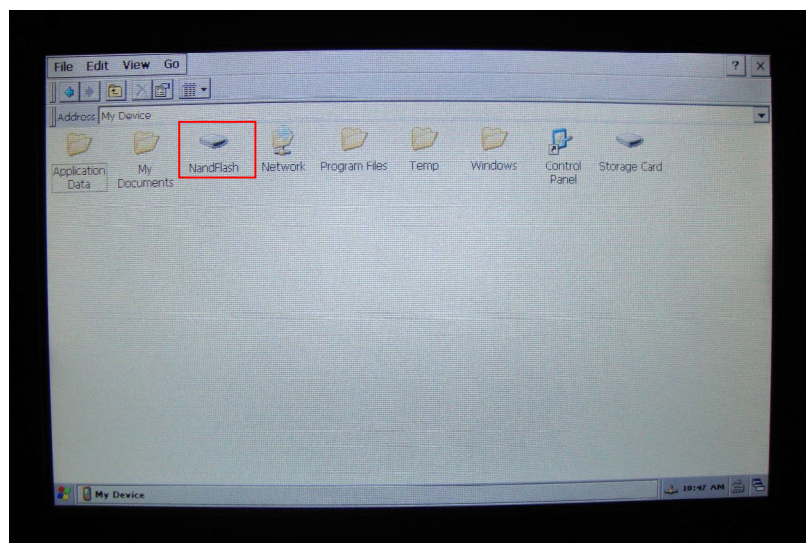
1. Insert SD card



2. My Device→SD card →open→copy



3. Nandflash→open→paste



Then open the folder and launch, exit same as the above.