

Z-AUDIO Module updating

Z-AUDIO Module

If you want to update Z-AUDIO Module, Four conditions need to be met:

- (1) One Z-AUDIO Module
- (2) The needed software when updating: LM Flash Programmer software
- (3) The *.bin
- (4) A cable

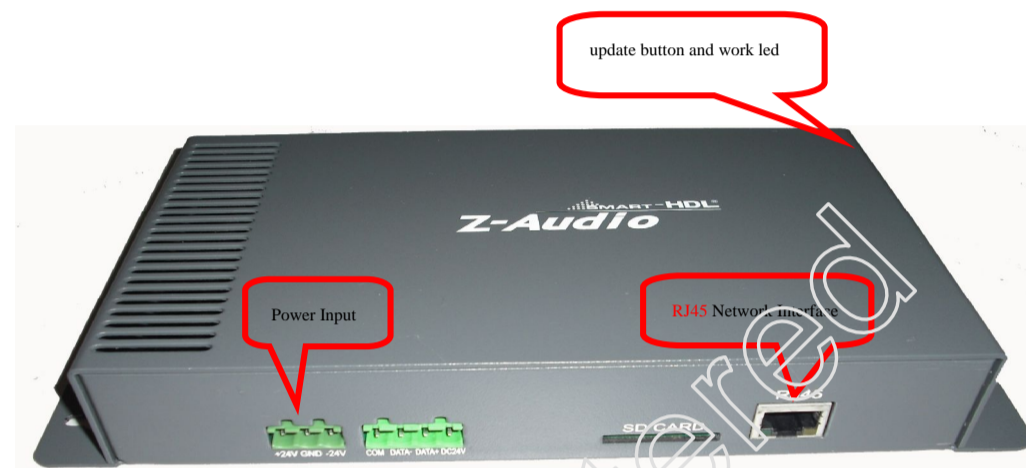


Preparing for upgrade work:

There are two steps:

一) Power on the Z-AUDIO Module and connect it to the network

The surface of the Z-AUDIO Module is as follow:



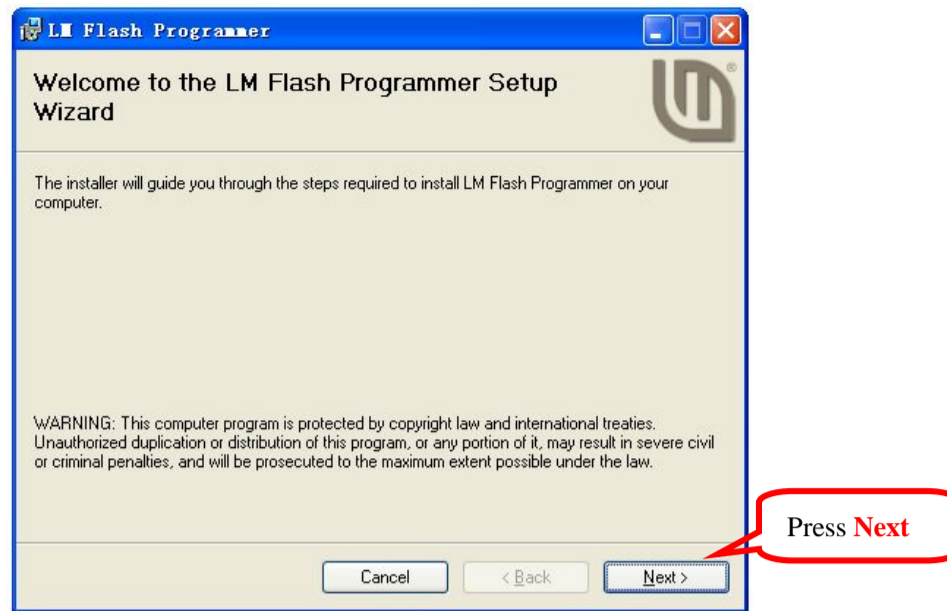
二) Make sure you have the LM Flash Programmer software on your PC

If you have LM Flash Programmer software on your PC, Skip this step, go to page 3, upgrade the module directly. If not, you should do as follows:

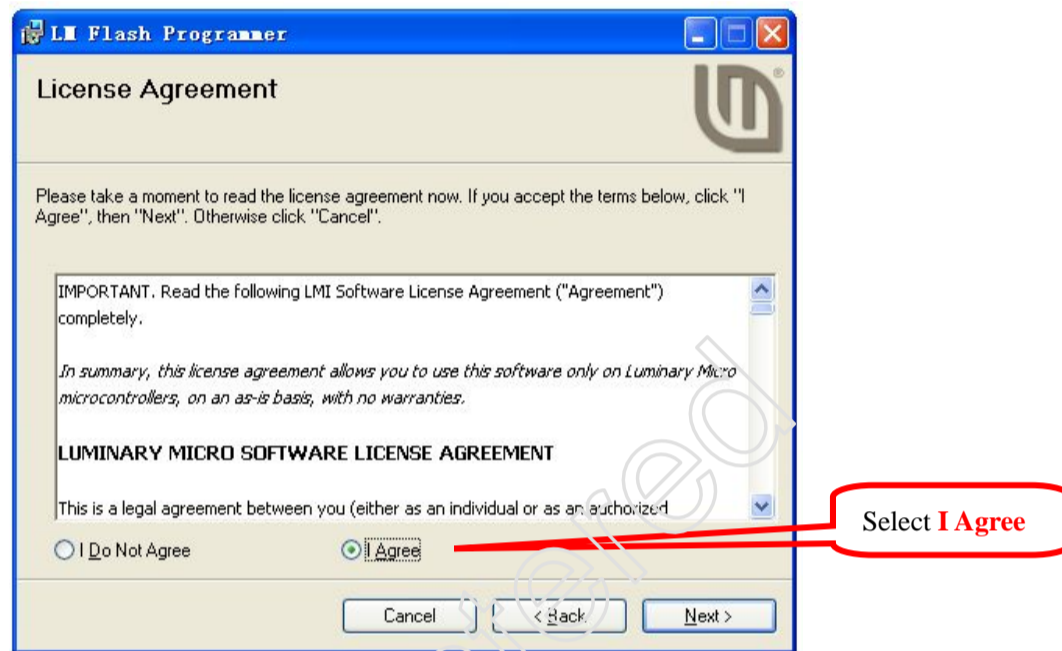
- ◆ Select the LM Flash Programmer.msi in the folder.



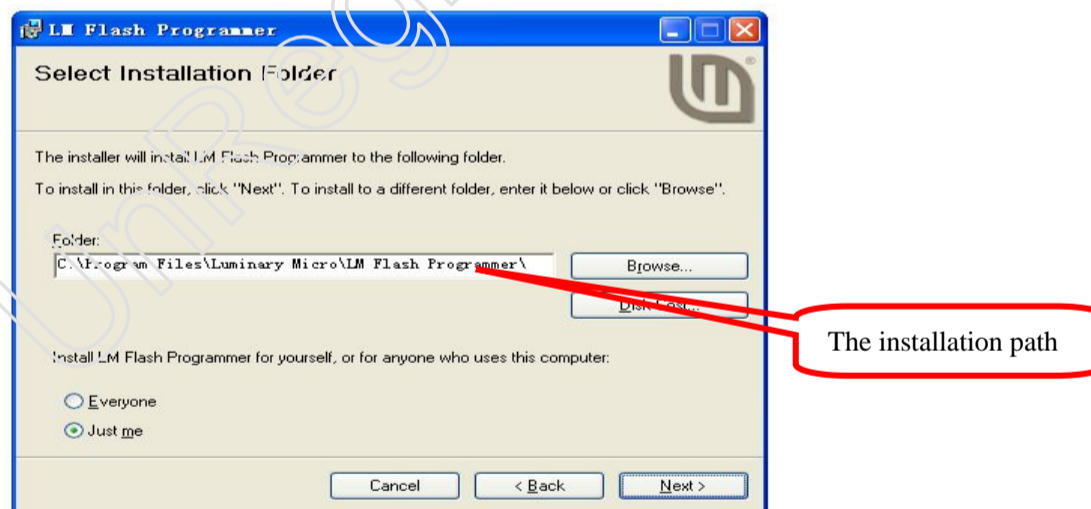
- ◆ double click the icon, go to the following page



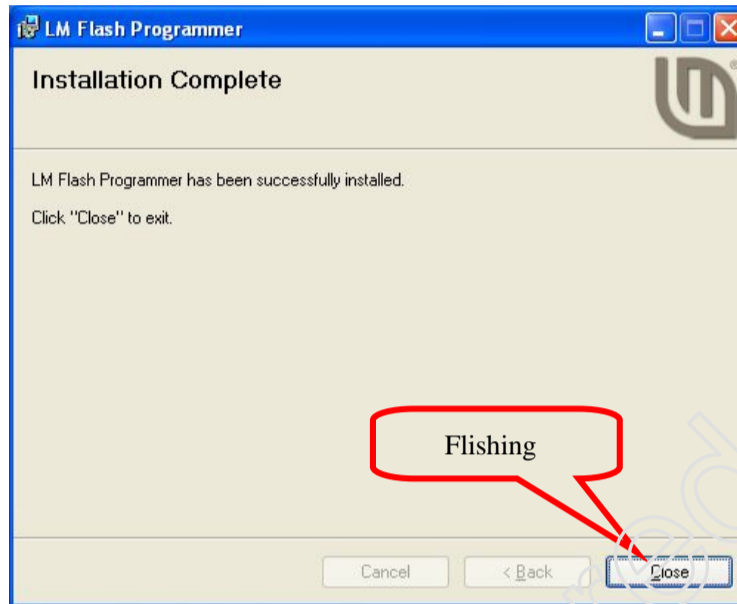
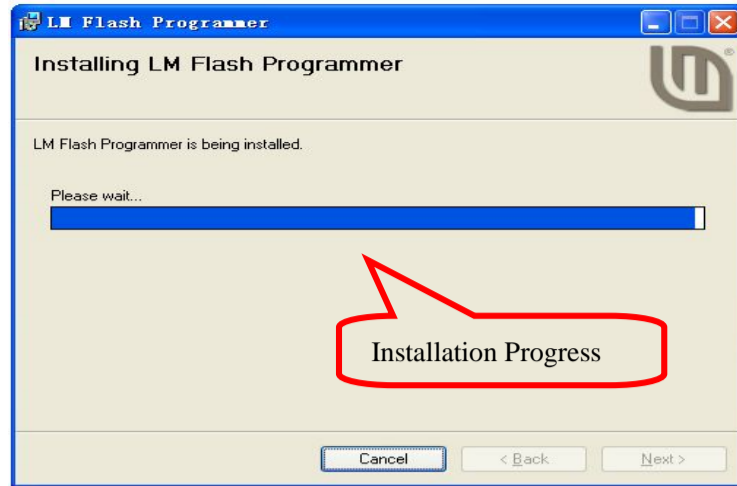
- ◆ Press “Next”, and go on:



- ◆ Select **I Agree** , and Press on **Next**



- ◆ Select installation folder, and wait several seconds

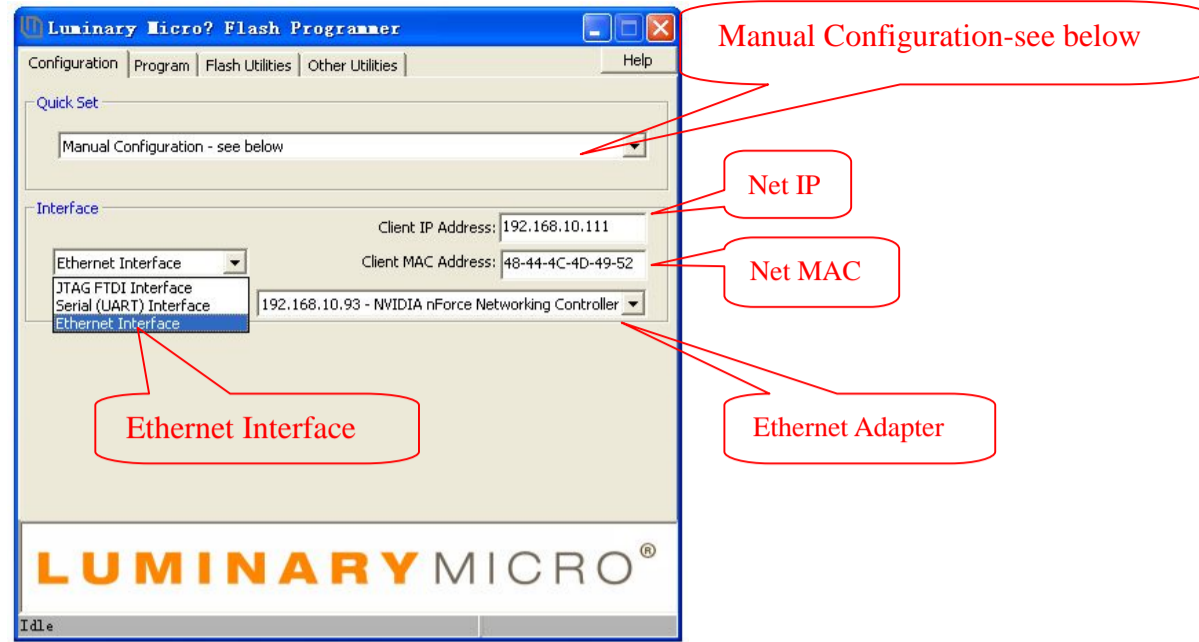


Press **Close**. The installation is complete. You can see a new icon added on your Desktop.



Steps of Update One-port Switch:

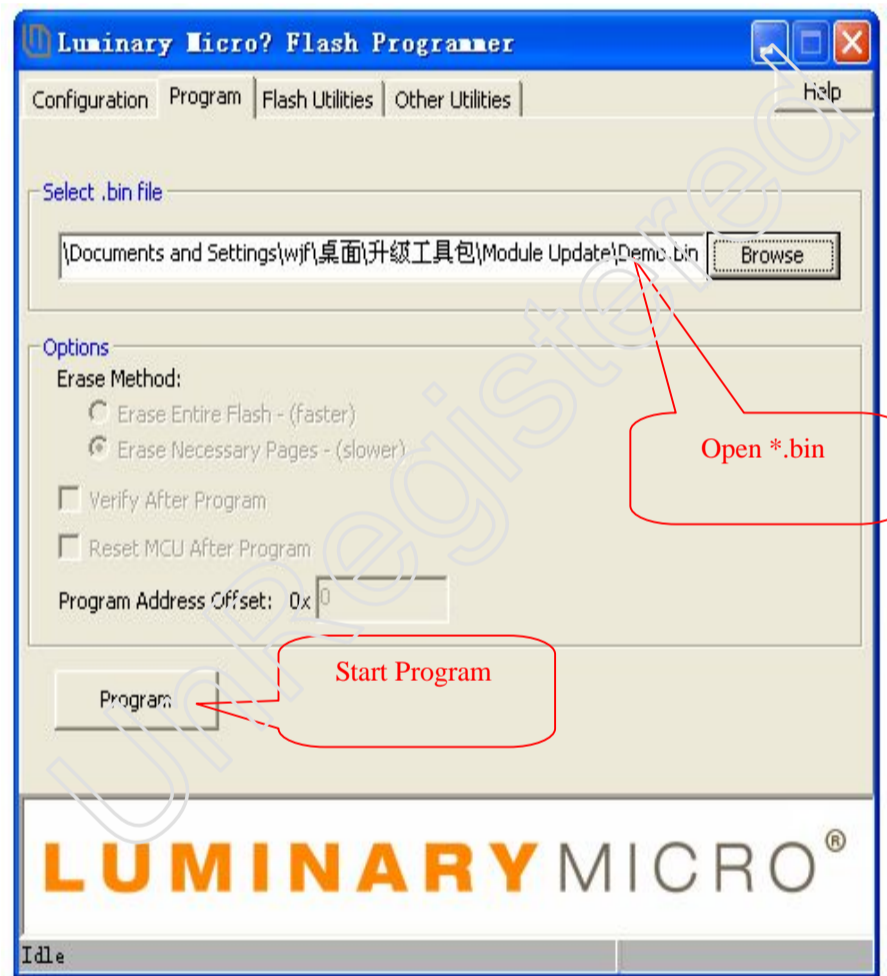
- (1) Run the **LM Flash Programmer**
- (2) Page **Configuration settings**
 - A) **Quick Set:** select **Manual Configuration**-see below
 - B) **Interface:** select **Ethernet Interface**
 - C) **Client IP Address:** **192.168.10.115**
 - D) **Client MAC Address:** **48-44-4C-4D-49-52**



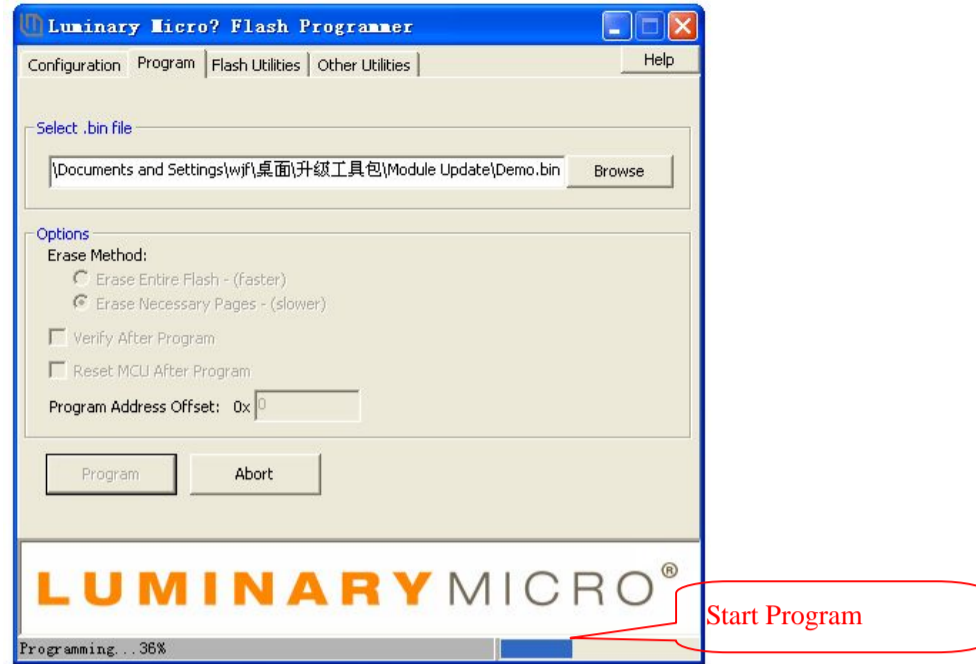
E) Ethernet Adapter (in default)

(3) Page **Program settings** **Steps of Updating:**

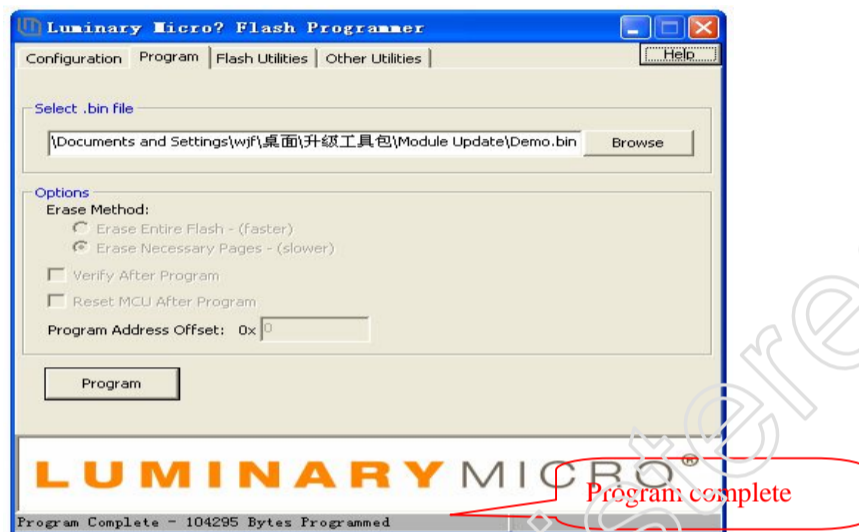
- (1) Turn off the power of the z-audio
- (2) Run the **LM Flash Programmer**
- (3) Select the binary file
- (4) Press **Program** on the picture. Start programming.
- (5) Keep on pressing **Update Button** on audio



(6) Turn on the power



When you power on the module, LM Flash Programmer software will establish the connection between Z-AUDIO Module and network and upgrade automatically, then you can release the **Update Button**.



Hints:

If now the module is in use, others devices that connect to it always time out, you can try any method from the following. Maybe this can solve the problem:

- A. After program, power off the module again last for 3 seconds, then power on.
- B. Keep pressing the button last for 20 seconds, all information of the module will turn to default.